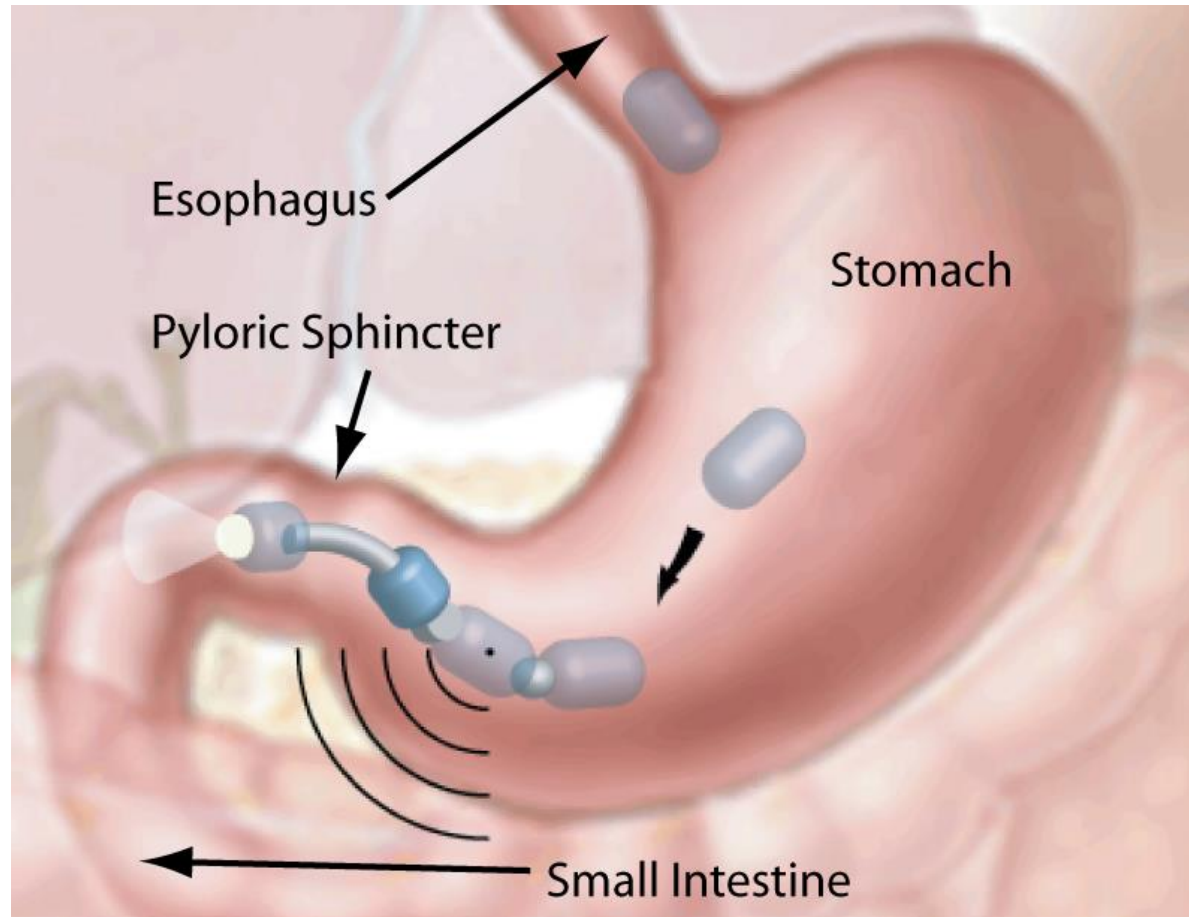


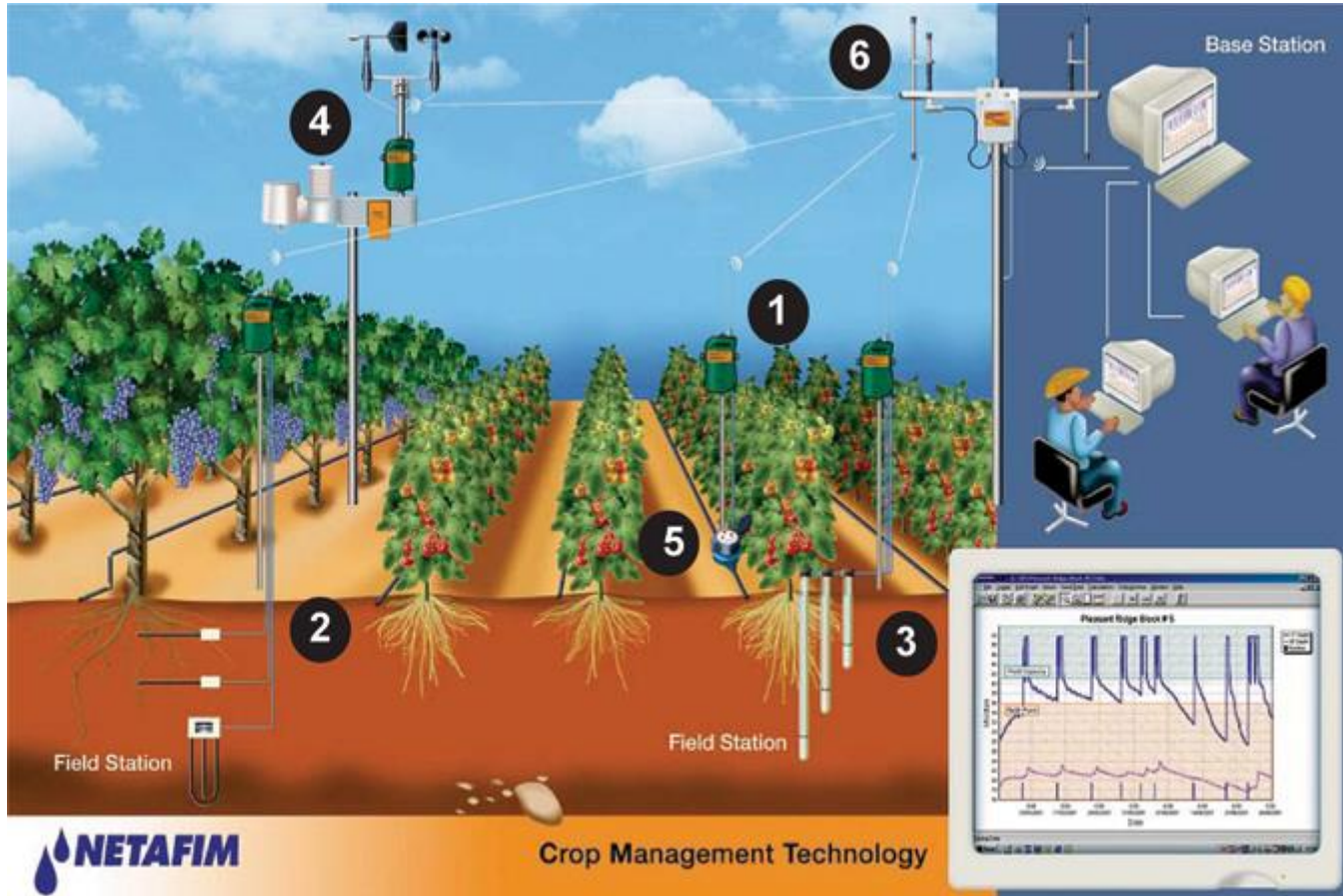
10 OF THE BEST ISRAELI INVENTIONS

GIVEN IMAGING



Given Imaging, a world leader in developing and marketing patient-friendly solutions for visualizing and detecting disorders of the GI tract, is best known for its PillCam (aka capsule endoscopy), now the gold standard for intestinal visualization.

NETAFIM



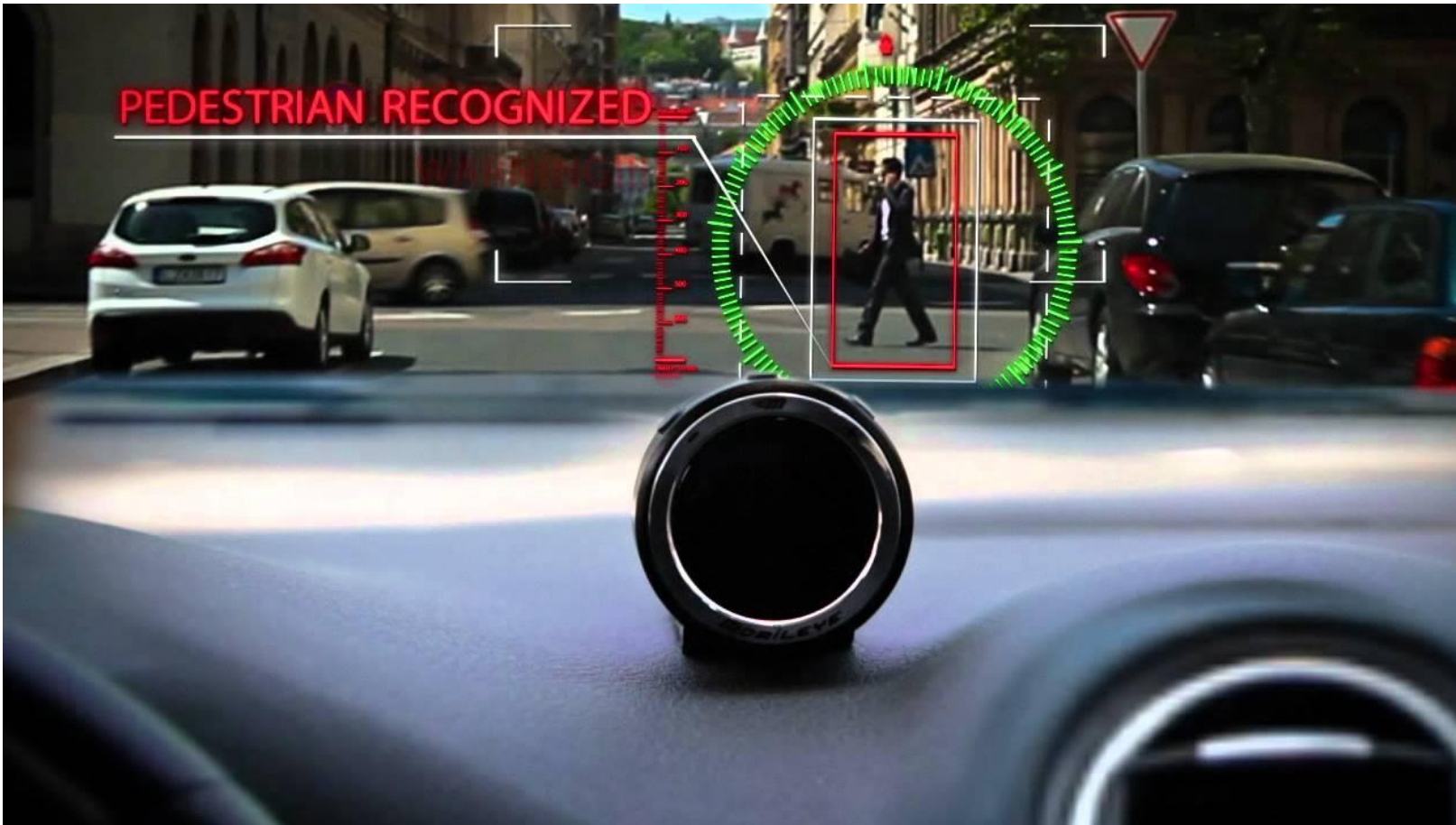
Netafim is a worldwide pioneer in smart drip and micro-irrigation, starting from the idea of Israeli engineer Simcha Blass for releasing water in controlled, slow drips to provide precise crop irrigation. The kibbutz-owned company operates in 112 countries with 13 factories throughout the world.

BABYSENSE



BabySense is a non-touch, no-radiation device designed to prevent crib death. Made by HiSense, the device monitors a baby's breathing and movements through the mattress during sleep. An auditory and visual alarm is activated if breathing ceases for more than 20 seconds or if breath rate slows to less than 10 breaths per minute.

MOBILE EYE



MobileEye combines a tiny digital camera with sophisticated algorithms to help drivers navigate more safely. The steering system-linked device sounds an alert when a driver is about to change lanes inadvertently, warns of an impending forward collision and detects pedestrians. MobileEye has deals with GM, BMW and Volvo, among others.

LEVIATHAN ENERGY



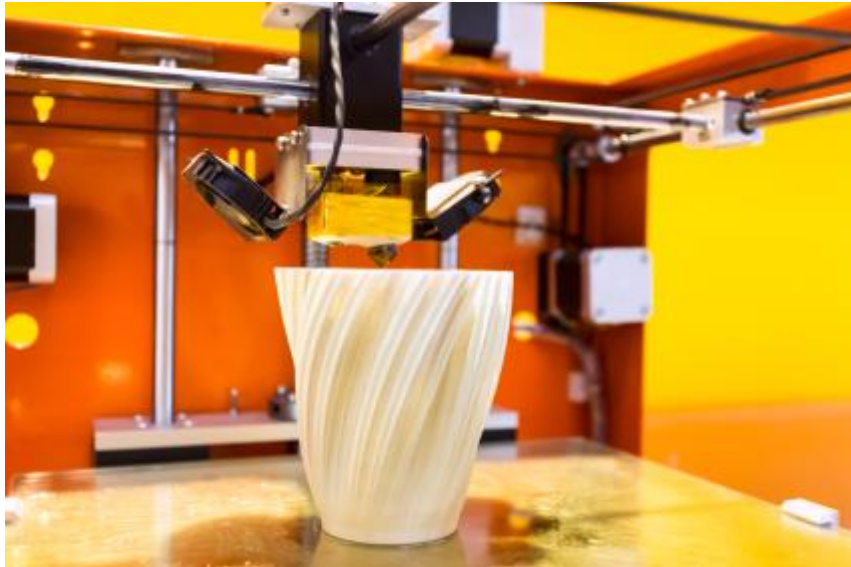
Leviathan Energy innovated the Wind Tulip, a cost-effective, silent, vibration-free wind turbine designed as an aesthetic environmental sculpture, producing clean energy at high efficiency from any direction.

INDIGO DIGITAL PRINTING



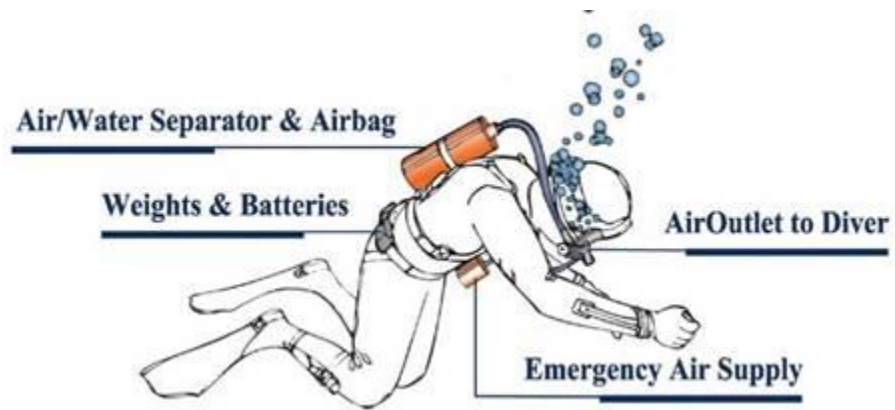
Hewlett Packard (HP)'s Indigo digital printing presses for general commercial printing, direct mail, photos and photobooks, publications, labels, business cards, flexible packaging and folding cartons print without films and plates, allowing for personalized short runs and changing text and images without stopping the press.

SOLID RAPID PROTOTYPING MACHINES



Cubital's solid rapid prototyping machines craft 3D models of engineering parts directly from designs on a computer screen. They're used in the automotive, aerospace, consumer products and medical industries, as well as engineering firms and academic and research institutions.

LIKE-A-FISH



Like-A-Fish unique air supply systems extract air from water, freeing leisure and professional scuba divers, as well as submarines and underwater habitats, from air tanks.

SOLARIS SYNERGY ISRAEL



Solaris Synergy innovated an environmentally friendly and economically beneficial way to float solar panels on water instead of taking up valuable land, generating energy while protecting and limiting evaporation from reservoir surfaces.

SAN DISK



Disk-on-Key, the ubiquitous little portable storage device made by SanDisk, was invented by Dov Moran as an upgraded version of disk and diskette technology through the use of flash memory and USB interface for connection to personal computers.